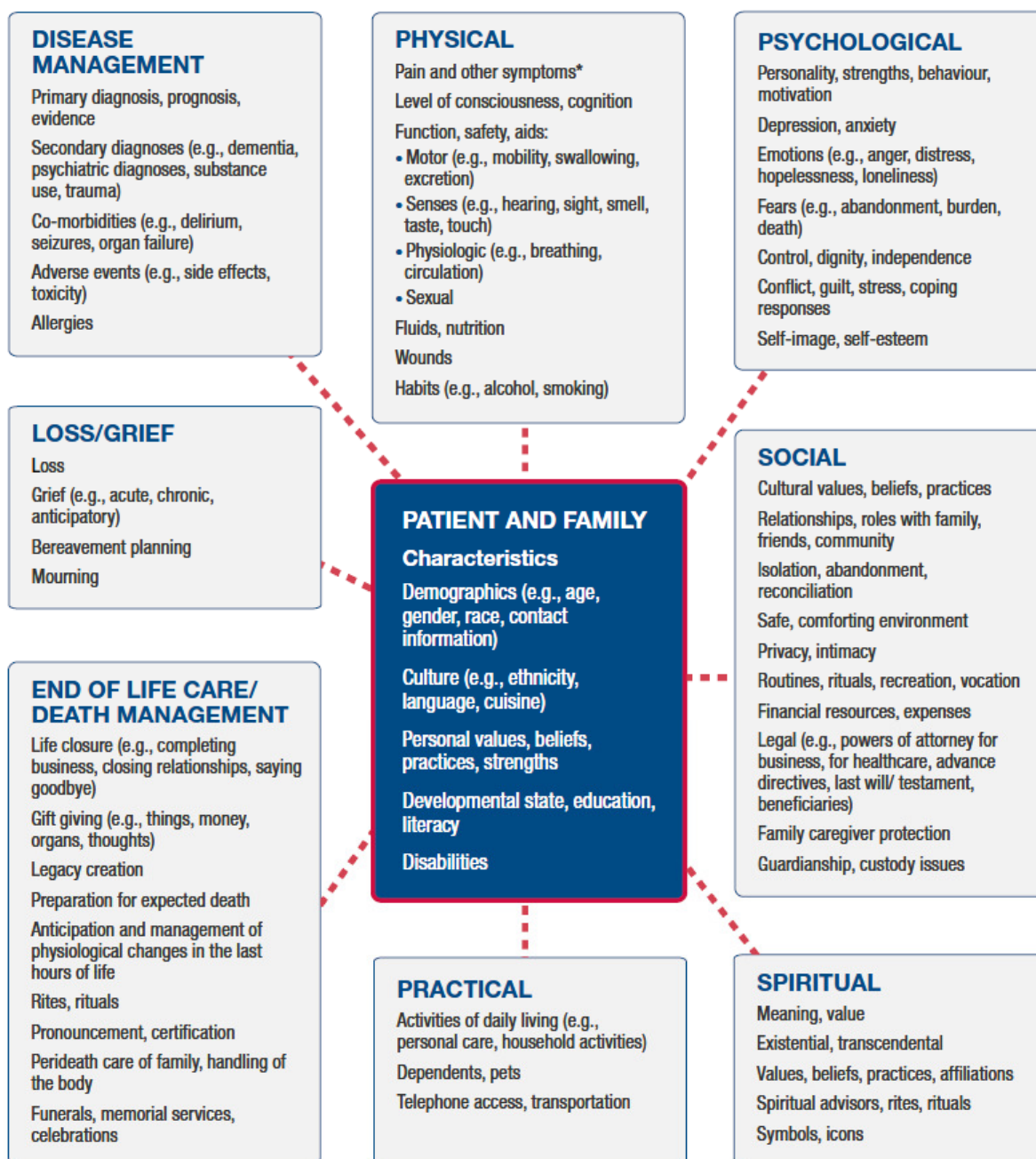


Figure #1: Domains of Issues Associated with Illness and Bereavement



* Other common symptoms include, but are not limited to:

Cardio-respiratory: breathlessness, cough, edema, hiccups, apnea, agonal breathing patterns

Gastrointestinal: nausea, vomiting, constipation, obstipation, bowel obstruction, diarrhea, bloating, dysphagia, dyspepsia

Oral conditions: dry mouth, mucositis

Skin conditions: dry skin, nodules, pruritus, rashes

General: agitation, anorexia, cachexia, fatigue, weakness, bleeding, drowsiness, effusions (pleural, peritoneal), fever/chills, incontinence, insomnia, lymphoedema, myoclonus, odor, prolapse, sweats, syncope, vertigo